

This Information sheet is to assist in the specifying and ordering of Metlam Toilet Partition Hardware.

**HINGES – QUANTITY REQUIRED:** Please specify the quantity of hinges you require. Metlam supplies hinges as individuals (each).

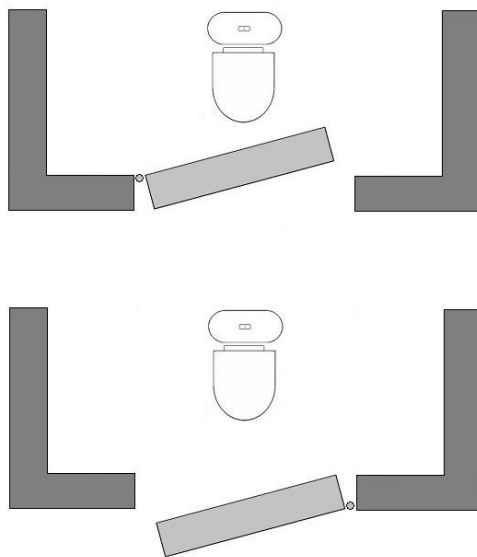
- Metlam recommends 3 hinges per door to prevent the door bowing.

**HINGES – HANDING:** Left Hand or Right Hand

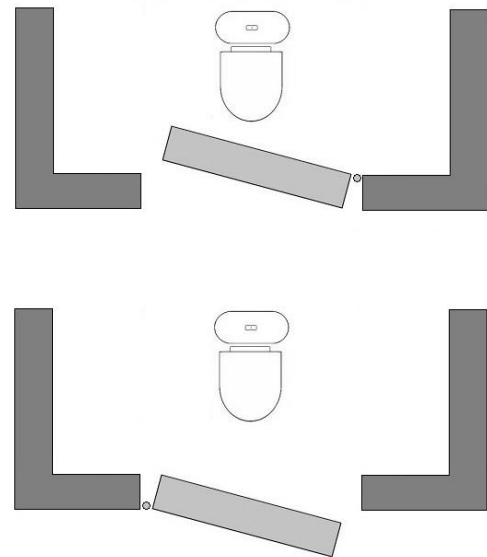
- Hinge handing is determined by the visibility of the hinge when looking at the door. If you are looking at the door and the hinge is visible on the Right Hand side, it is a RIGHT HAND hinge. If you are looking at the door and the hinge is visible on the Left Hand side, it is a LEFT HAND hinge.



**Right Hand Hinge**



**Left Hand Hinge**



**HINGES – HOLD OPEN OR HOLD CLOSED:** Please specify if the hinges are to be Hold Open (door remains in the open position) or Hold Closed (door remains in the closed position).

- **GRAVITY HINGES** have no mechanical components and therefore assist the door to move to Hold Open or Hold Closed Position. Gravity Hinges cannot be adjusted.
- **SPRING HINGES** include mechanical components that allow for door movement to Hold Open or Hold Closed. Spring Hinges can be adjusted or tensioned to determine the force (this is done on site by the installer).

**BOARD THICKNESS:** To ensure the correct fixings are supplied, please specify the board thickness (applies for Screw Fix and Bolt Through set up).

- If no fixings are required, please specify NO FIXINGS when ordering.
- If board thickness is not specified at the time of ordering Metlam will provide the largest fixings available. Fixings can be cut down on site to suit board thickness required.

**MOUNTING – SCREW FIX OR BOLT THROUGH:** Please specify mounting type. Our website states what mounting types are available for each product.

**FINISH:** Please specify which finish you are after. Our website states what finishes are available for each product. • SCP – Satin Chrome Plate • DESIGNER – Satin Matte Black • ANMB – Antimicrobial Coated • BCP – Bright Chrome Plate • SPP – Satin Pearl Plate • SNP – Satin Nickel Plate

**Kits:** Metlam’s Toilet Partition Hardware can be purchased in a complete set or “kit”, inclusive of the components required for use to install one partition. Each Kit Contains:

- 1 x Lock and Indicator Set
- 1 x Set of Hinges (kits can include 2 hinges or 3 hinges per pack)
- 1 x Hat and Coat Hook
- 1 x Door Bumper
- 1 x Staple (optional)

\*Please note Kit pricing will vary depending on components selected. The components for your kit should be selected from our various Toilet Partition Hardware Product Categories.

Please contact our Head Office or your [local Metlam Australia Contact](#) for further information.